

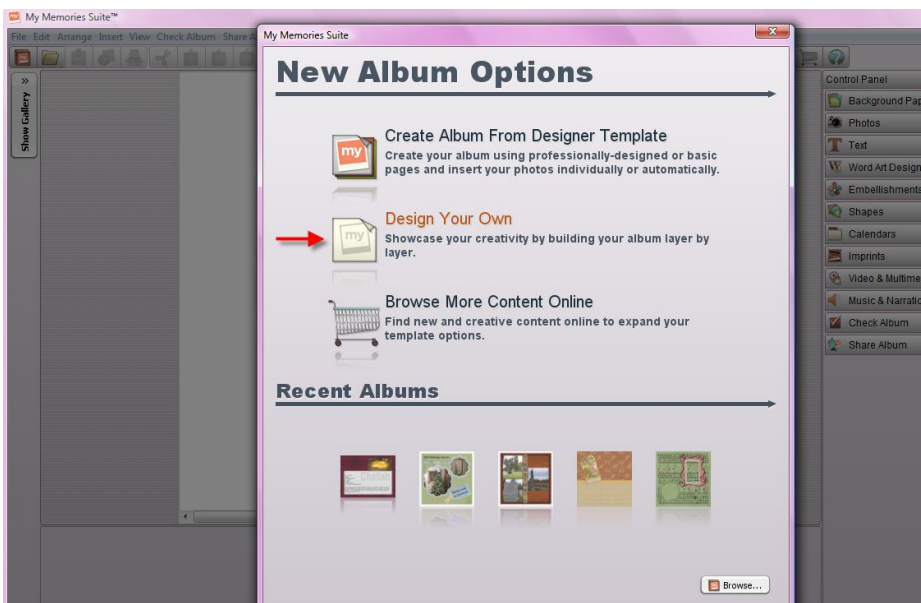
Using the Card .PNG

By Barbara Eastwick

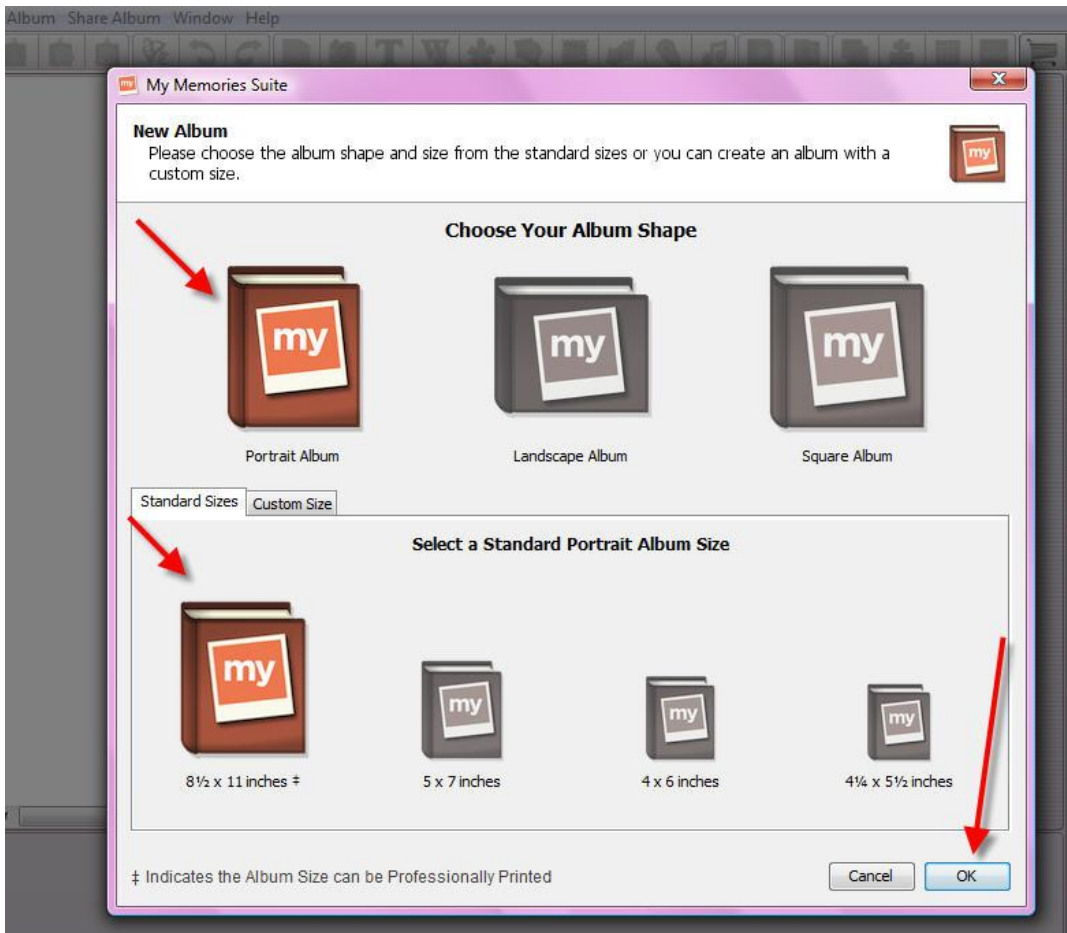
Wouldn't it be great to just print out fast and easy Valentine's Cards for your child's class? And what if it was just as easy to personalize them? For just pennies, you can make these!



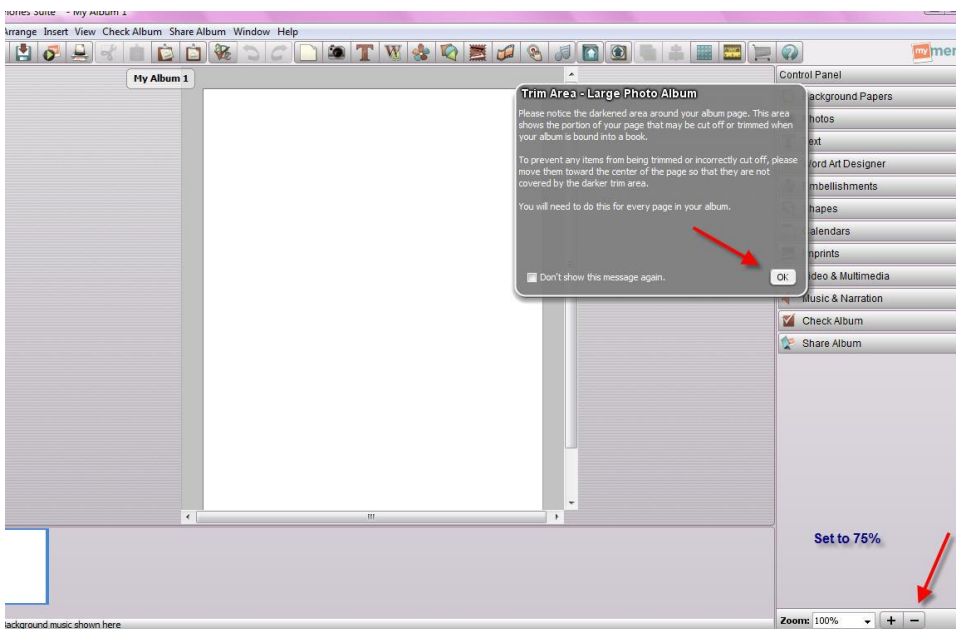
All you need is a card .png file and MyMemories Suite Software! Just open the software and choose to "Design Your Own"



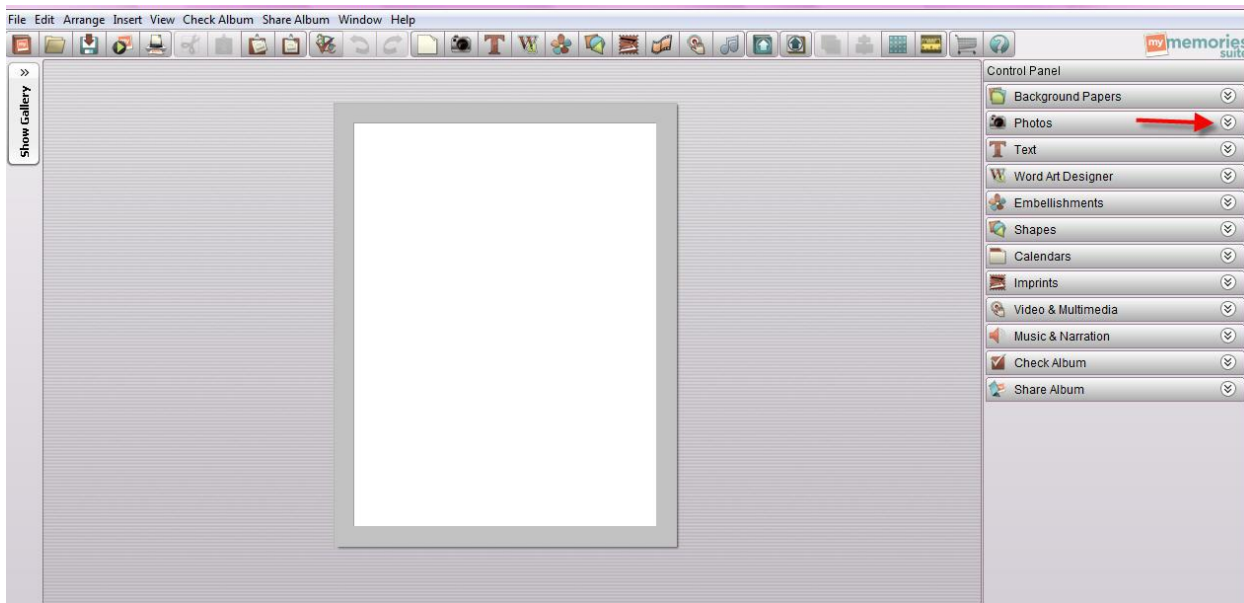
Choose "Portrait Album" and "8 1/2 x 11 inches" and click "OK"



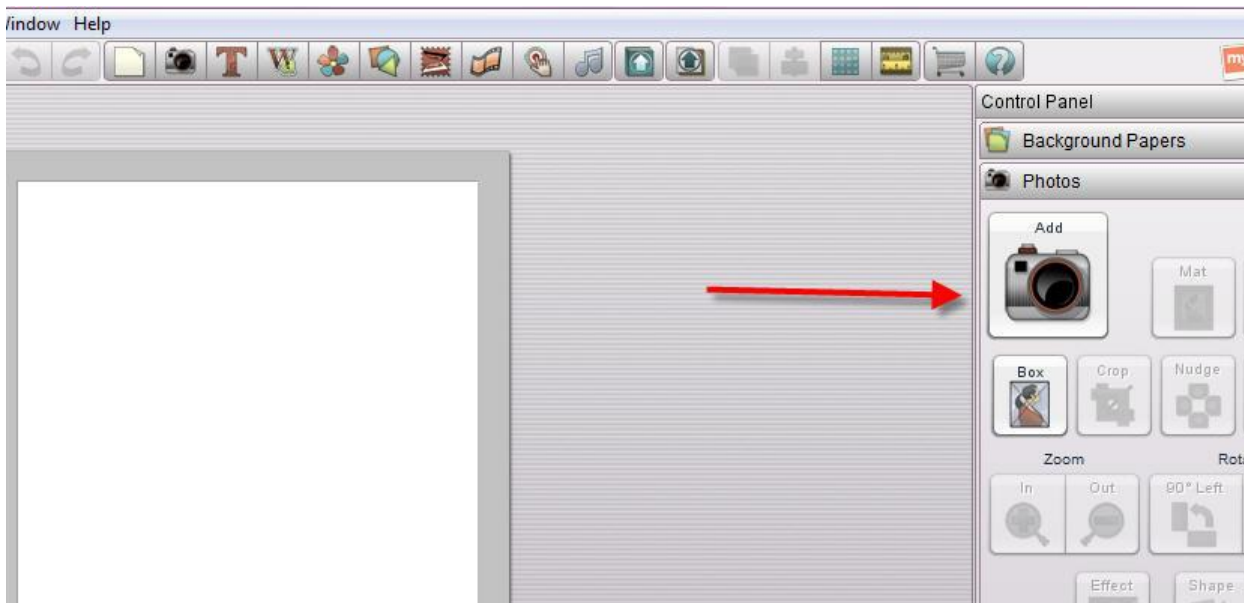
The “Trim Area” reminder will pop up, and it is letting you know about the “printable area” of your project. You can click your workspace to 75% to see exactly how your page will line up.



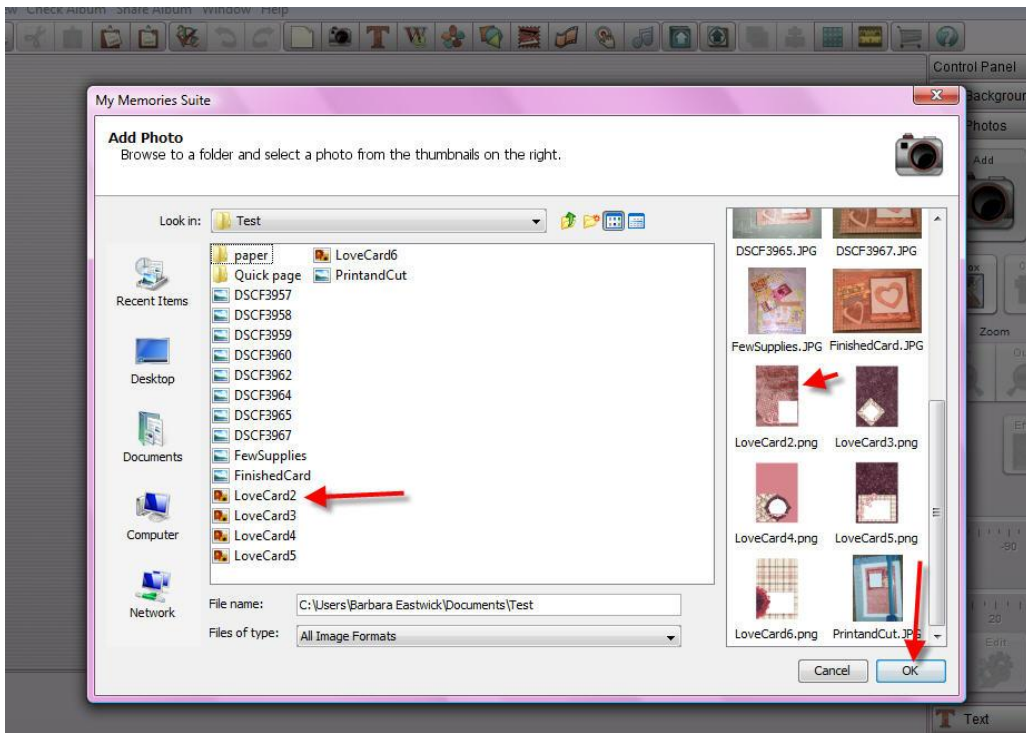
To get started, we'll need to import the .png file. Click on Photos



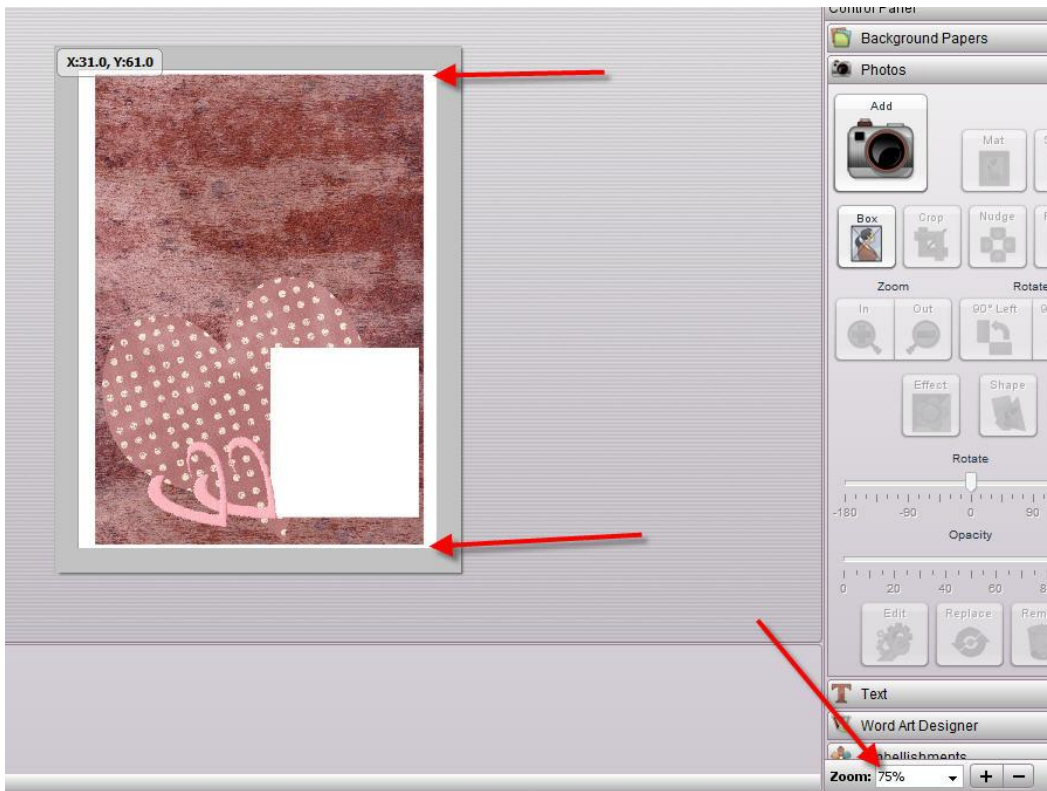
Add:



And then find your .png file on your Hard Drive where you have it located:

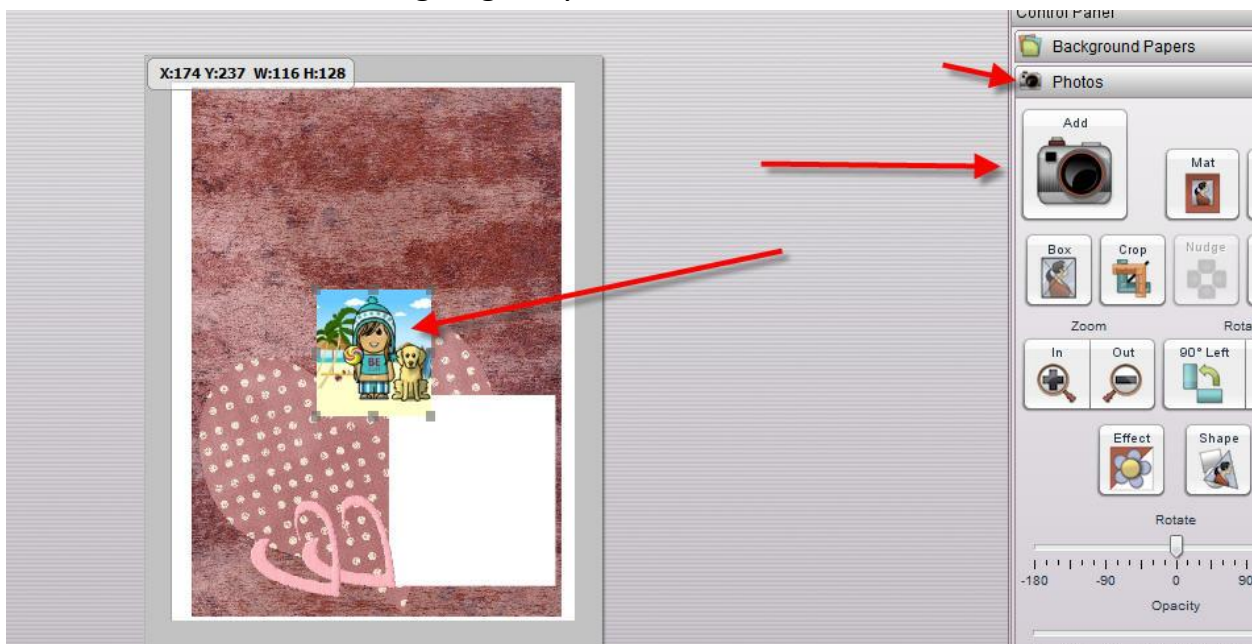


Bring it up on into your workspace and stretch it to fit inside the printable area.



Next, add the image you wish to insert into the photo box (white rectangle) area. I'm using a cartoon my daughter

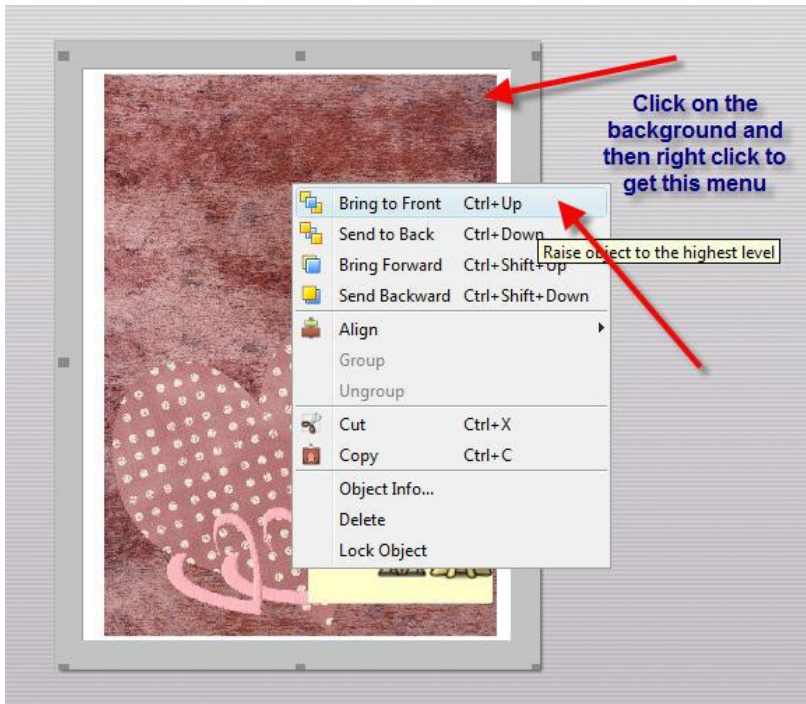
made of herself and our dog. Again, you'll click: Photo – Add



and then size the image above the white block to fit the space.



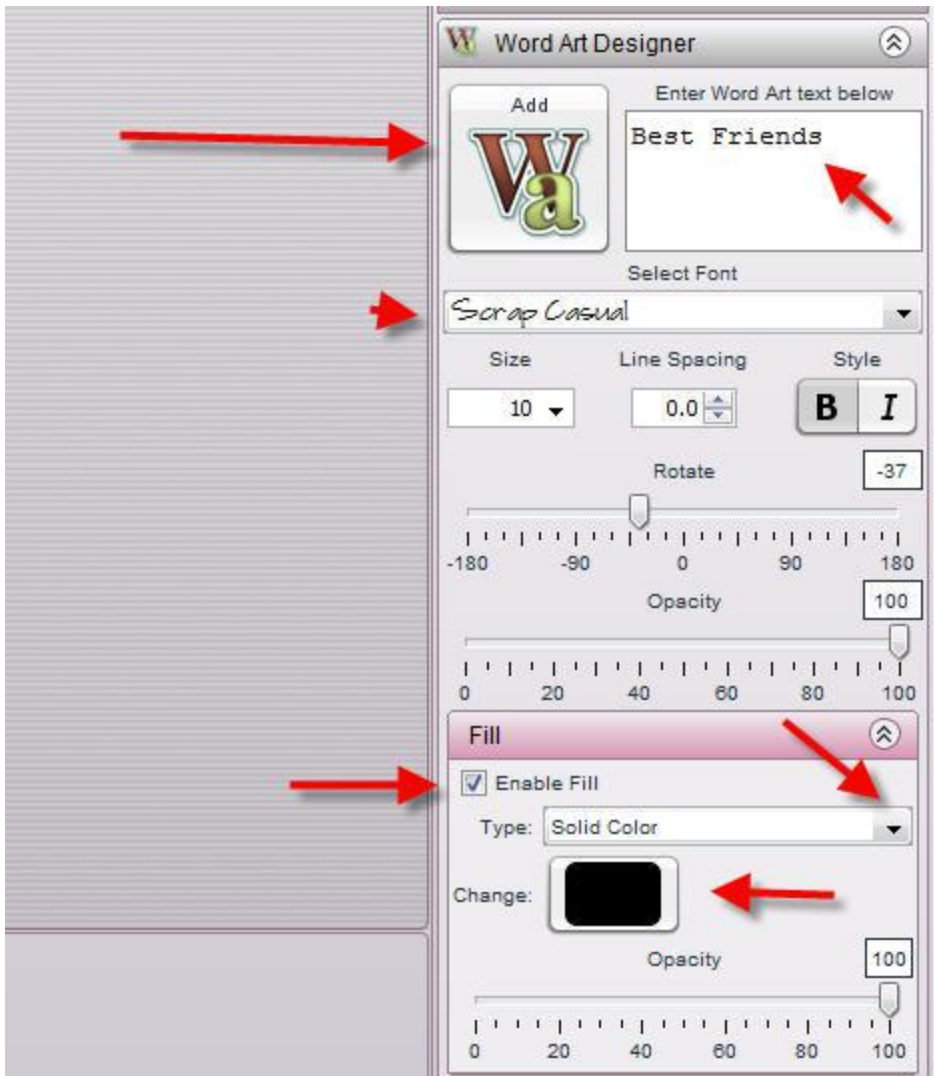
From here you'll want to move the card .png file to the top, this will ensure the proper spacing of your photo (or image) inside the photobox. Click on the card .png to highlight it and then right click to see the arrangement menu. Choose "Bring to Front".



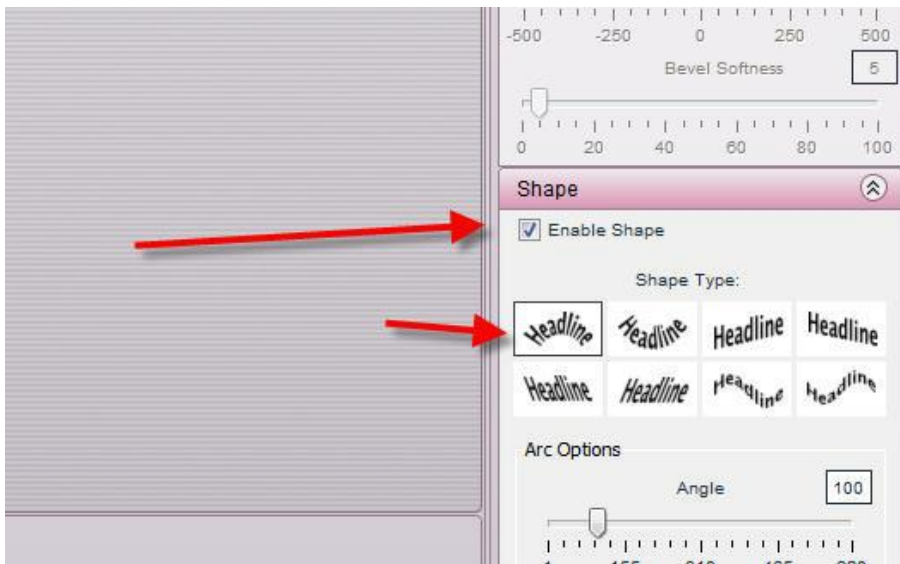
Now let's add some text to personalize. Click on the "Word Art Designer" and "Add" (the Wa button).



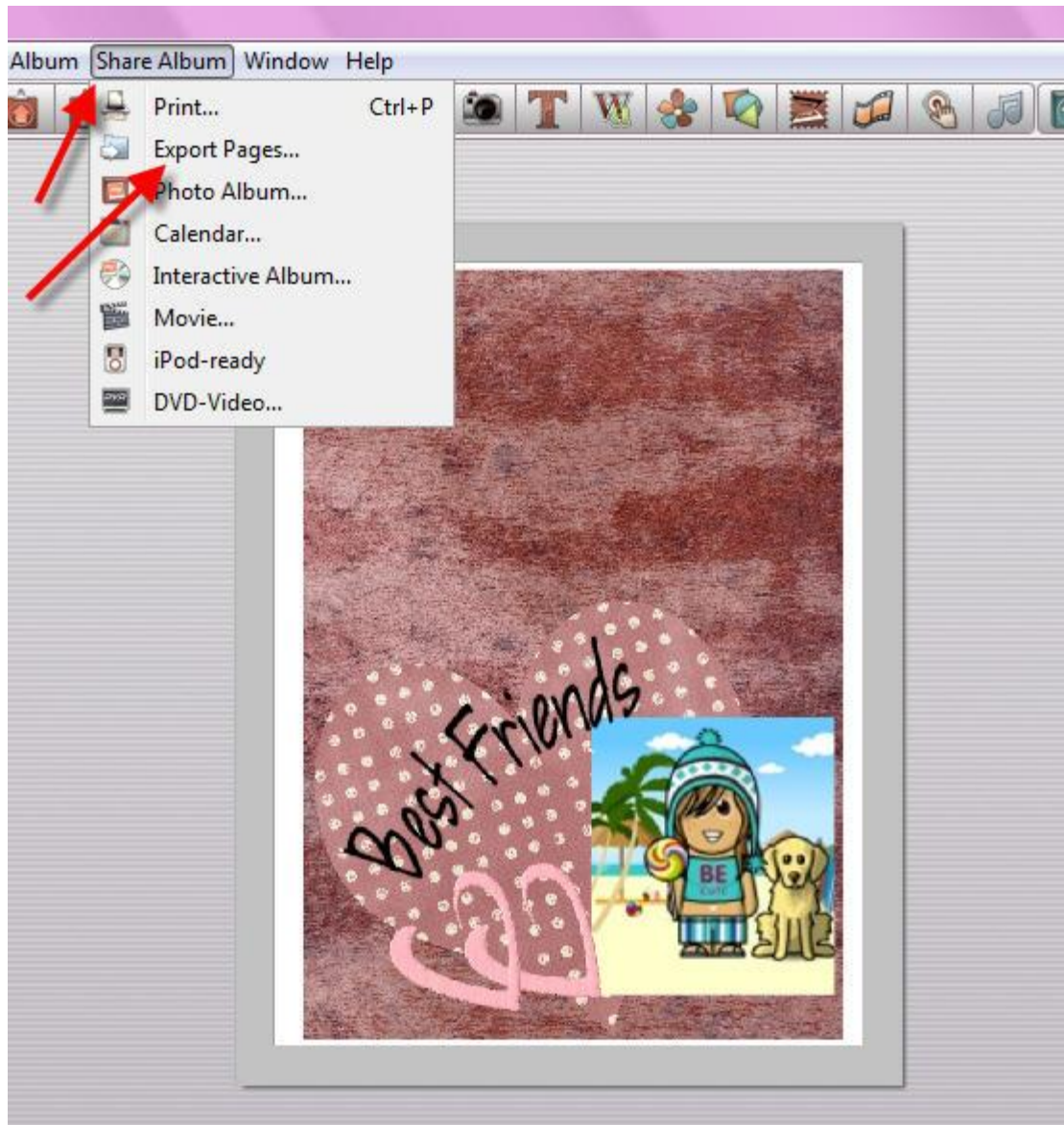
This will bring up the words Word Art onto your project. Just change the text to what you'd like it to be. For this example I typed "Best Friends" and chose "Scrap Casual" for my font. I also toggled the "Enable Fill" selection. Then I made "Solid Color" my fill choice. I ensured black was the color being selected.



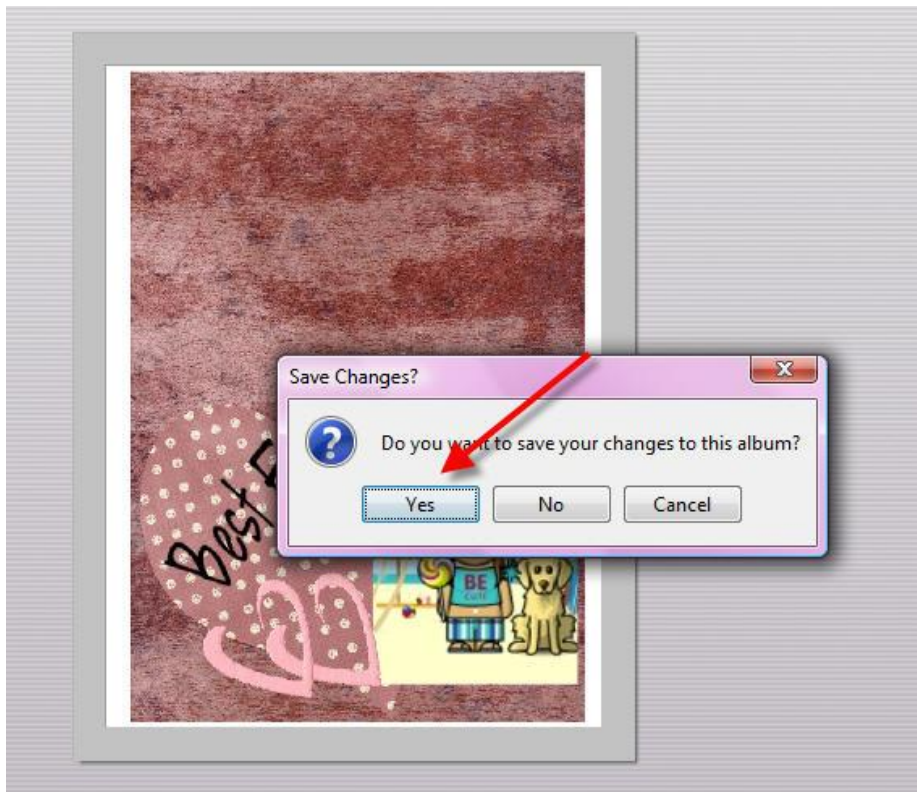
Then I clicked “Enable Shape” and chose the rounded Headline arc.



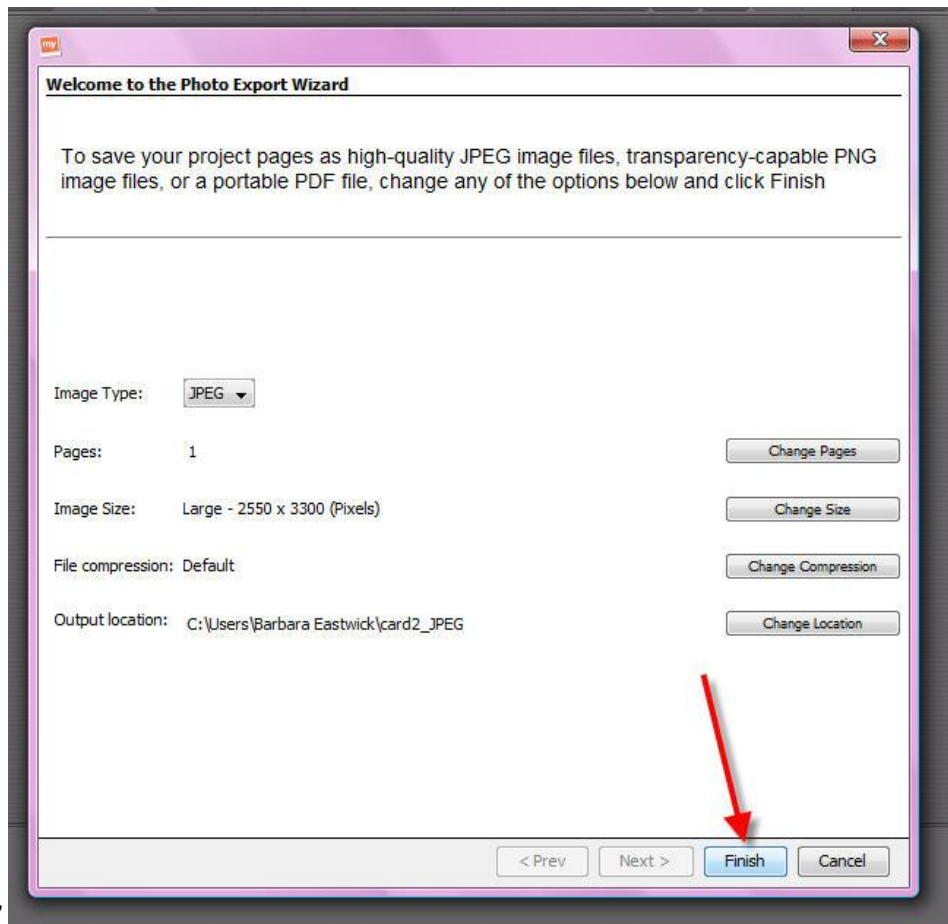
I moved the Word Art I just created to place where I wanted to see it inside the heart. Now to print it, I'll either click “Share Album” ---- “Print” or in this case, I'll save it as a printable .jpg file and then print later. Click “Share Album” ---- “Export Pages”



I always save the album I'm working on so I can edit and reuse later. When it asks "Do you want to save your changes to this album" – I choose "yes"



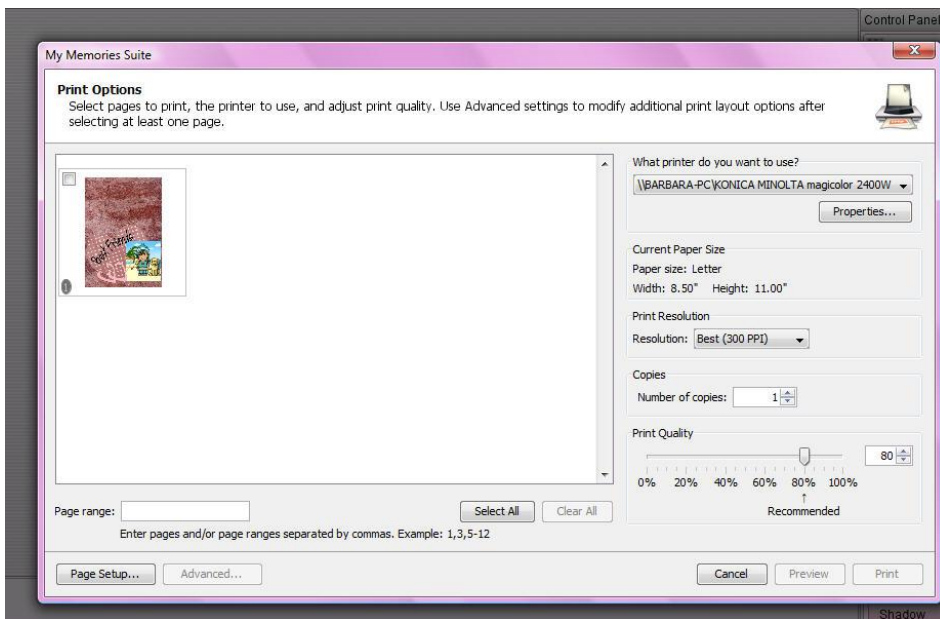
The default for the Photo Export Wizard seems perfect for this, so I'll leave them as they are



and click "Finish"

This file now exists as a .jpg that you can print at a later time, or have printed at your favorite print source.

Or you can directly print from the menu by choosing Print from the Share Album menu. Select the project you wish to print (there's only the one here in this example), set the printing parameters and click "Print"



If you wish, you can set them up on a page with 2 aligned side by side and print out 2 at the same time! Fast, easy Valentine's Day card in a snap!

